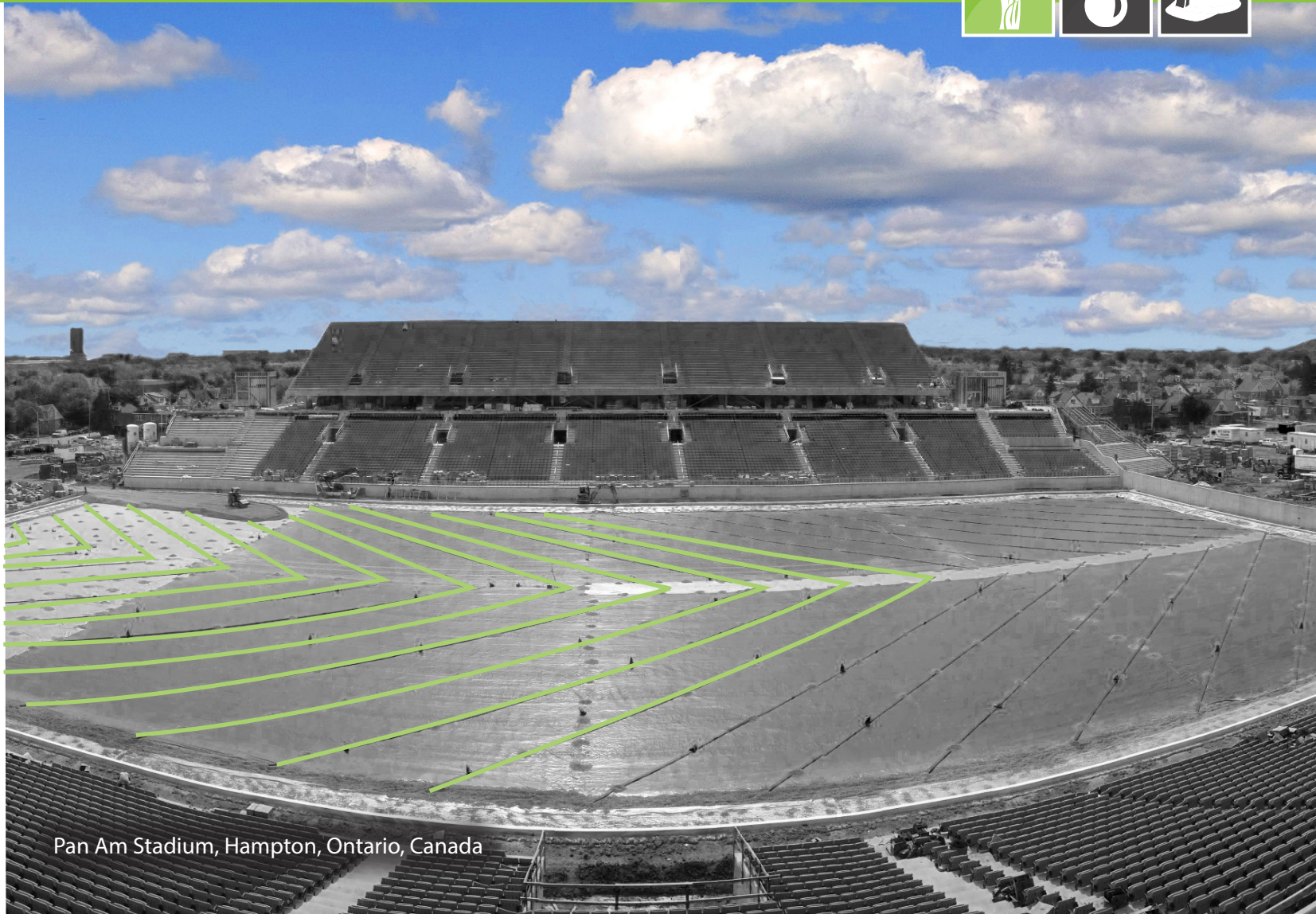
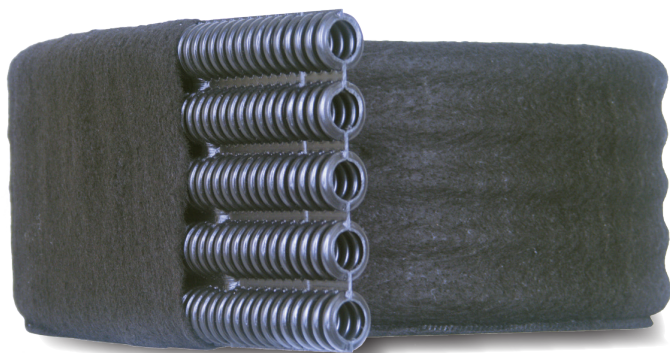


Draining Athletic Fields



Pan Am Stadium, Hampton, Ontario, Canada



Multi-Flow pipe drainage system is the solution for all types of athletic field drainage situations. Multi-Flow utilizes the dependable structure of round HDPE pipe, reduced in size, and grouped together. It's available in 6, 12, and 18 inch profiles, Multi-Flow has the highest flow rates of any comparable product. Multi-Flow can be trenched into vertical installation, or simply rolled out for horizontal applications. Multi-Flow has been installed worldwide in thousands of athletic facilities with exceptional results, and has had no reported failures. There might be a cheaper product on the market, but there is no product that can guarantee success like Multi-Flow.

MULTI-FLOW

Multi-Flow Draining Athletic Fields

Synthetic Turf

The average synthetic turf field built in the United States. Costs over a million dollars. Protecting that investment with a Multi-Flow drain system is typically less than 1% of the entire field budget. With a wide variety of sizes and connections, Multi-Flow offers adaptability to any project. Our portfolio spans the globe with satisfied customers and zero product failures. Gain peace-of-mind by incorporating Multi-Flow into your next turf project.



Installation

Installing Multi-Flow can be as simple as rolling it out over the soil separator and covering with aggregate. Connections to the transport pipes can be made in any number of ways due to Multi-Flow's wide range of connectors.



MULTI-FLOW

Multi-Flow Draining Athletic Fields

Natural Turf Installation

When natural turf athletic fields get saturated, play time gets interrupted. Multi-Flow can provide 30+ year protection against soggy, torn up, and unusable turf. Quick and affordable installations, comprised of: a primary sand filter and a quality geotextile, surrounding the highest quality drain core on the market. Multi-Flow is the drainage solution for natural turf fields.



Prasco Park - Mason, OH



Connections

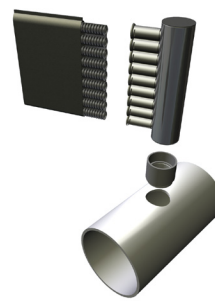
The Multi-Flow product line includes more than 80 different types of connectors. Whether installed vertically or horizontally, Multi-Flow offers a wide variety of couplers, outlets and transitions. Connecting Multi-Flow to standard round pipe is simple and straight-forward.



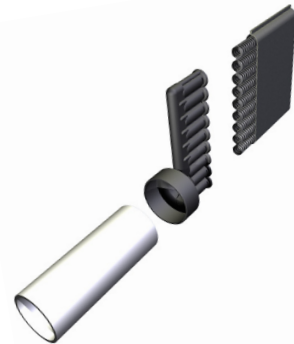
To Corrugated HDPE



To Dual Wall HDPE



To sch.40/sdr35

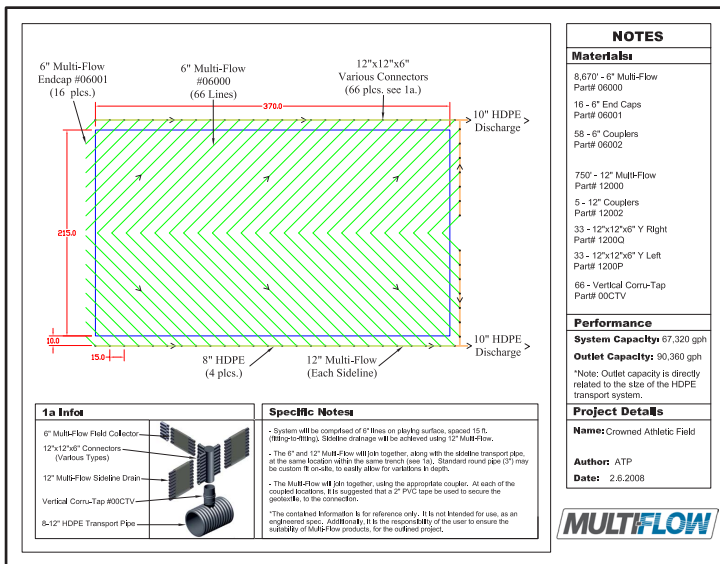
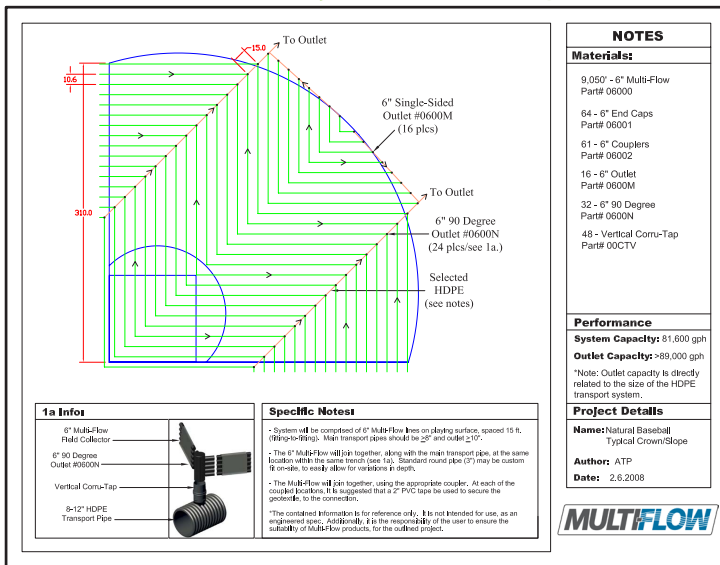


To PVC/HDPE

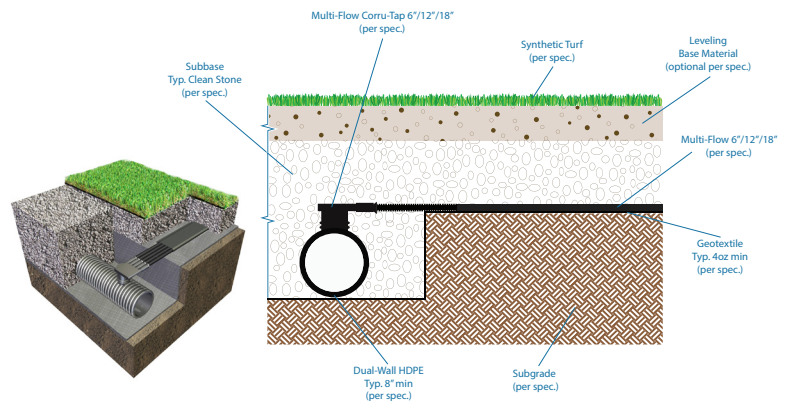
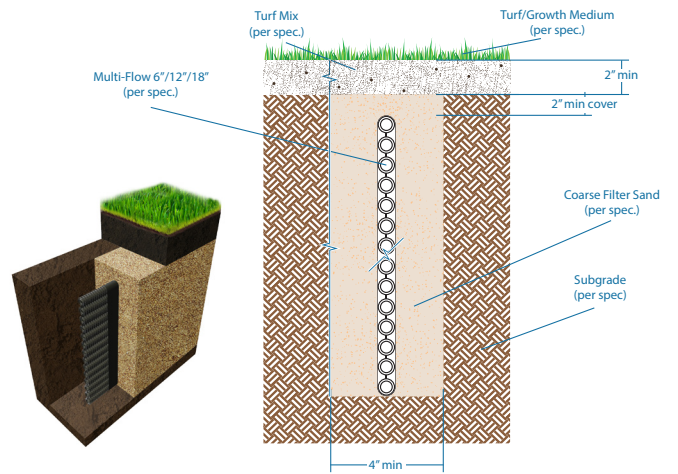


Multi-Flow Draining Athletic Fields

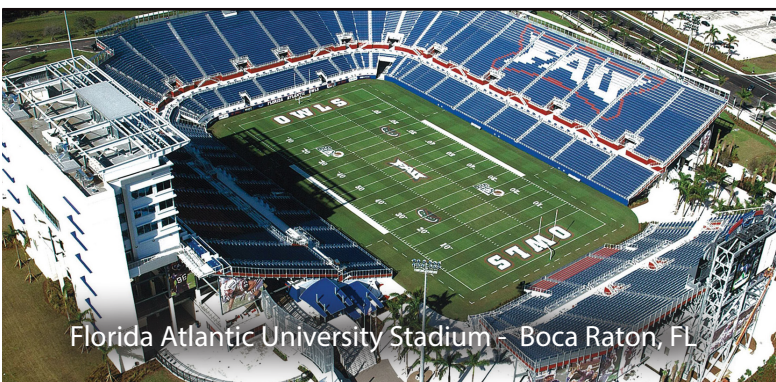
Field Layouts/Designs



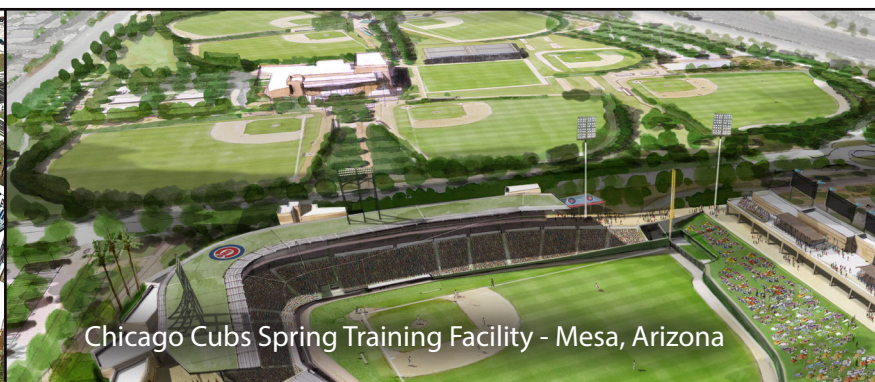
Design Details/Renderings



Varicore offers drainage consulting and complete design services at no cost. This includes (but not limited to) AutoCAD®, Inventor®, Illustrator®, Photoshop®, and Google Earth®. We can provide multiple file types and views of almost any drainage scenario. Give us a call and challenge our team with your project at (800) 978-8007.



Florida Atlantic University Stadium - Boca Raton, FL



Chicago Cubs Spring Training Facility - Mesa, Arizona

Drainage Design | Consulting | Estimating | Downloads | Technical Files
Contact us with project information or visit our website.

